

RAPID CHARGER

KSC-31

SERVICE MANUAL

REVISED

KENWOOD

Kenwood Corporation

© 2008-12 PRINTED IN JAPAN
B51-8685-10 (N) 509

This service manual has been revised due to the modification of the AC adapter and the addition of types T and X.



CONTENTS

PARTS LIST	2
FLOW CHART	3
PC BOARD	4
SCHEMATIC DIAGRAM	5
SPECIFICATIONS	BACK COVER



KSC-31

Document Copyrights

Copyright 2008 by Kenwood Corporation. All rights reserved.

No part of this manual may be reproduced, translated, distributed, or transmitted in any form or by any means, electronic, mechanical, photocopying, recording, or otherwise, for any purpose without the prior written permission of Kenwood.

Disclaimer

While every precaution has been taken in the preparation of this manual, Kenwood assumes no responsibility for errors or omissions. Neither is any liability assumed for damages resulting from the use of the information contained herein. Kenwood reserves the right to make changes to any products herein at any time for improvement purposes.

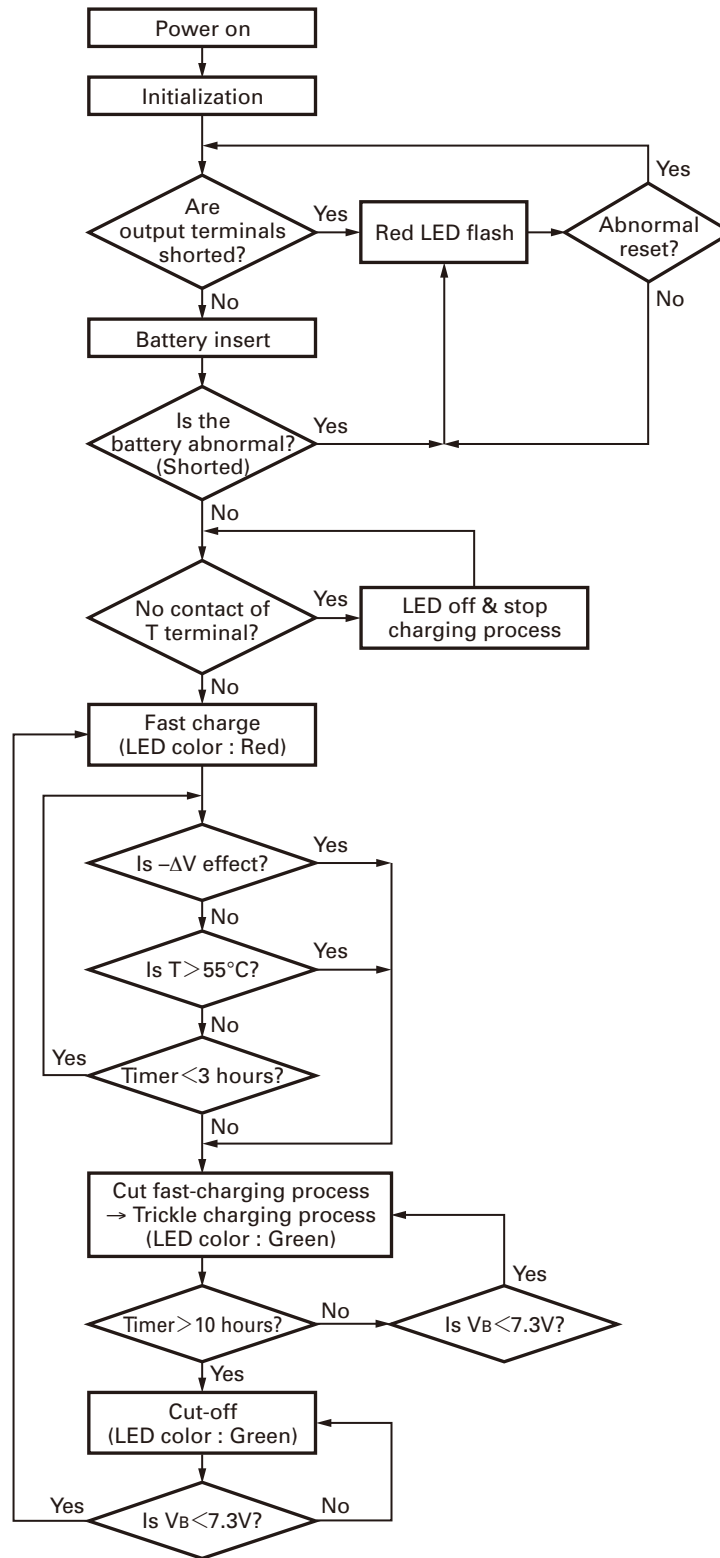
PARTS LIST

*: New Parts

△: Safety critical components

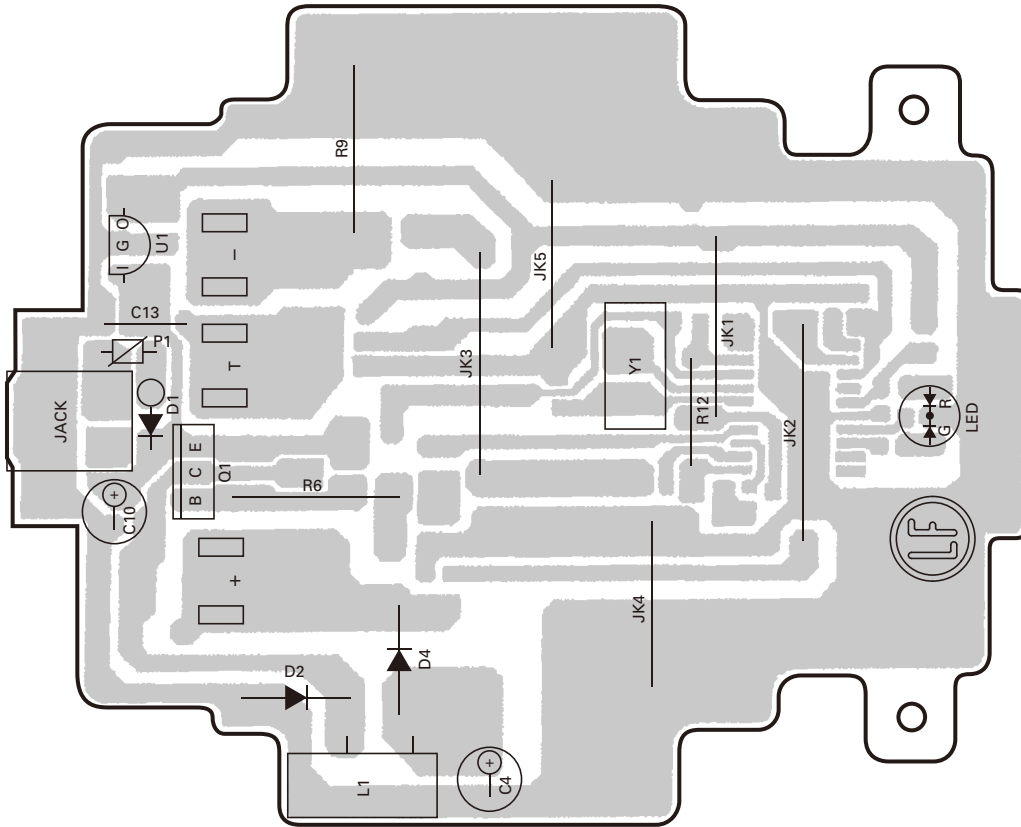
Ref. No.	Address	New parts	Parts No.	Description	Destination
KSC-31					
			A02-3861-08	CABINET (UPPER)	
			A02-3862-08	CABINET (BOTTOM)	
			B43-1170-08	BADGE	
			E03-0200-08	DC JACK	
			E23-1258-08	RELAY TERMINAL	
			N83-2610-45	PAN HEAD TAPTITE SCREW	
		*	W02-3736-08	ELECTRIC CIRCUIT MODULE	
△			W08-0971-35	AC ADAPTER 230V AC 50/60HZ	E
△		*	W08-0972-25	AC ADAPTER 230V AC 50/60HZ	T
△		*	W08-1046-05	AC ADAPTER 100-240V AC 50/60HZ	K
△		*	W08-1078-05	AC ADAPTER 100-240V AC 50/60HZ	X

FLOW CHART

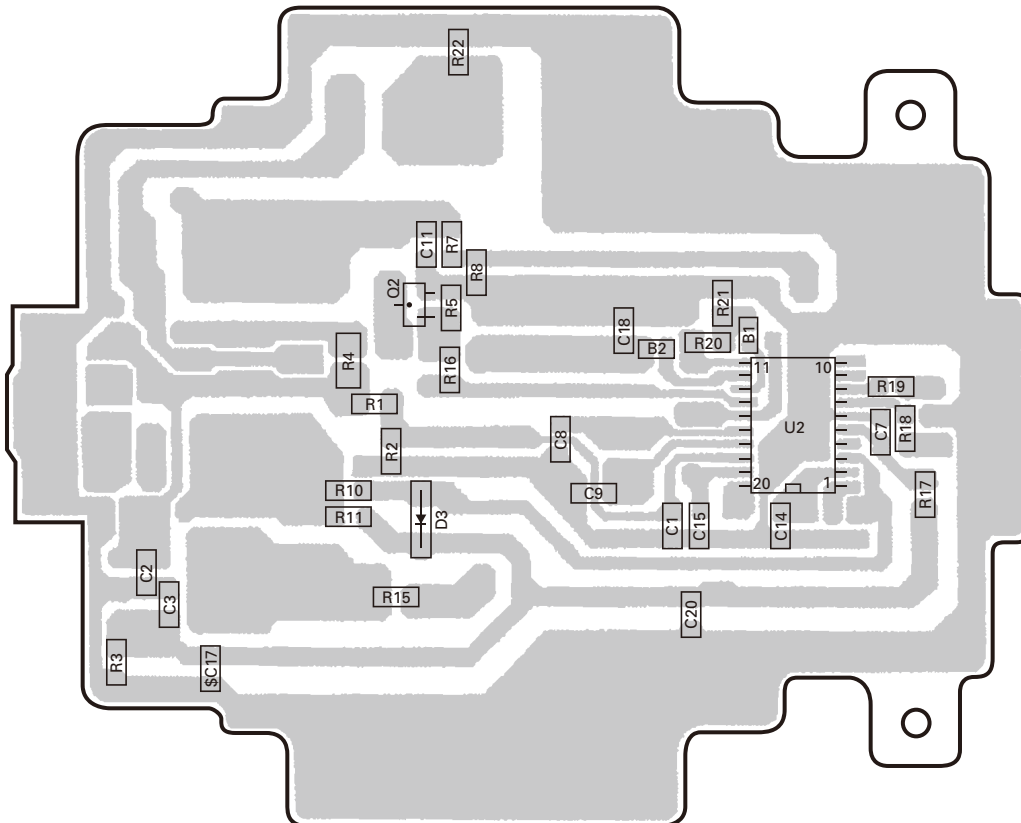


PC BOARD

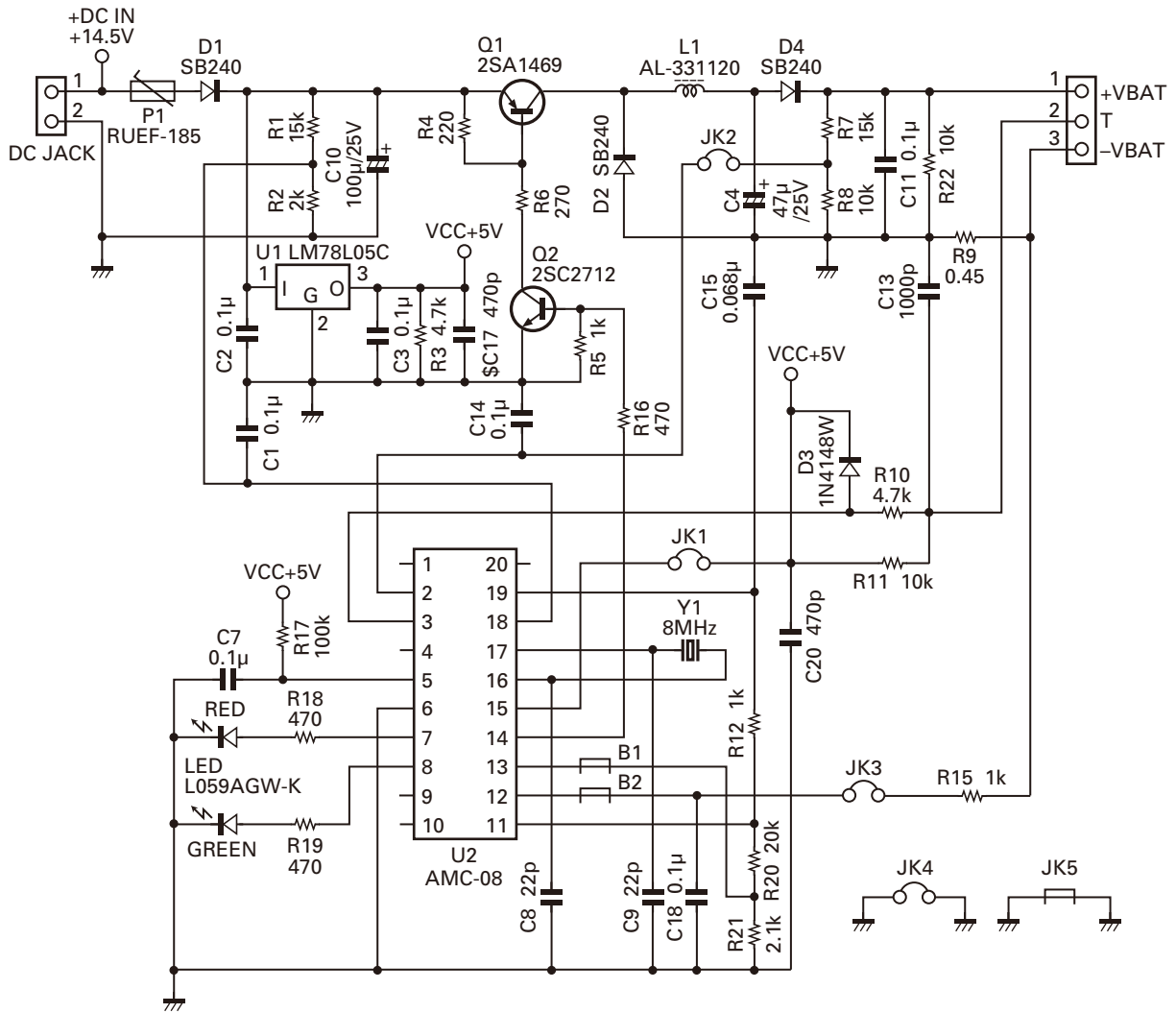
ELECTRIC CIRCUIT MODULE (W02-3736-08) Component side view



ELECTRIC CIRCUIT MODULE (W02-3736-08) Foil side view



SCHEMATIC DIAGRAM



SPECIFICATIONS

Input voltage.....	K,X: AC 100~240V (Use the supplied AC adapter) E,T: AC 230V (Use the supplied AC adapter)
Charging current.....	850mA±5%
Charging time.....	KNB-29N: Approx. 180 minutes KNB-30A: Approx. 120 minutes
Usable temperature range.....	5°C to 40°C (41°F to 104°F)
Dimensions (W x H x D, charger only).....	86.3 (3-3/8) x 46.2 (1-7/8) x 100.0 (4) mm (inches)
Weight (Charger only).....	Approx. 100g / 0.22 lbs

Kenwood Corporation

2967-3, Ishikawa-machi, Hachioji-shi, Tokyo, 192-8525 Japan

Kenwood U.S.A. Corporation

P.O. BOX 22745, 2201 East Dominguez Street, Long Beach,
CA 90801-5745, U.S.A.

Kenwood Electronics Canada Inc.

6070 Kestrel Road, Mississauga, Ontario, Canada L5T 1S8

Kenwood Electronics Deutschland GmbH

Rembrücker Str. 15, 63150 Heusenstamm, Germany

Kenwood Electronics Belgium N.V.

Leuvensesteenweg 248 J, 1800 Vilvoorde, Belgium

Kenwood Electronics France S.A.

L'Etoile Paris Nord 2, 50 Allée des Impressionnistes,
Bp 58416 Villepinte, 95944 Roissy Ch De Gaulle Cedex

Kenwood Electronics UK Limited

KENWOOD House, Dwight Road, Watford, Herts.,
WD18 9EB United Kingdom

Kenwood Electronics Europe B.V.

Amsterdamseweg 37, 1422 AC Uithoorn, The Netherlands

Kenwood Electronics Italia S.p.A.

Via G. Sirtori, 7/9 20129 Milano, Italy

Kenwood Ibérica, S.A.

Bolivia, 239-08020 Barcelona, Spain

Kenwood Electronics Australia Pty. Ltd.

(A.C.N. 001 499 074)

16 Giffnock Avenue, Centrecourt Estate, North Ryde, N.S.W. 2113 Australia

Kenwood Electronics (Hong Kong) Ltd.

Unit 3712-3724, Level 37, Tower one Metroplaza, 223 Hing Fong Road,
Kwai Fong, N.T., Hong Kong

Kenwood Electronics Singapore Pte Ltd

1 Ang Mo Kio Street 63, Singapore 569110

